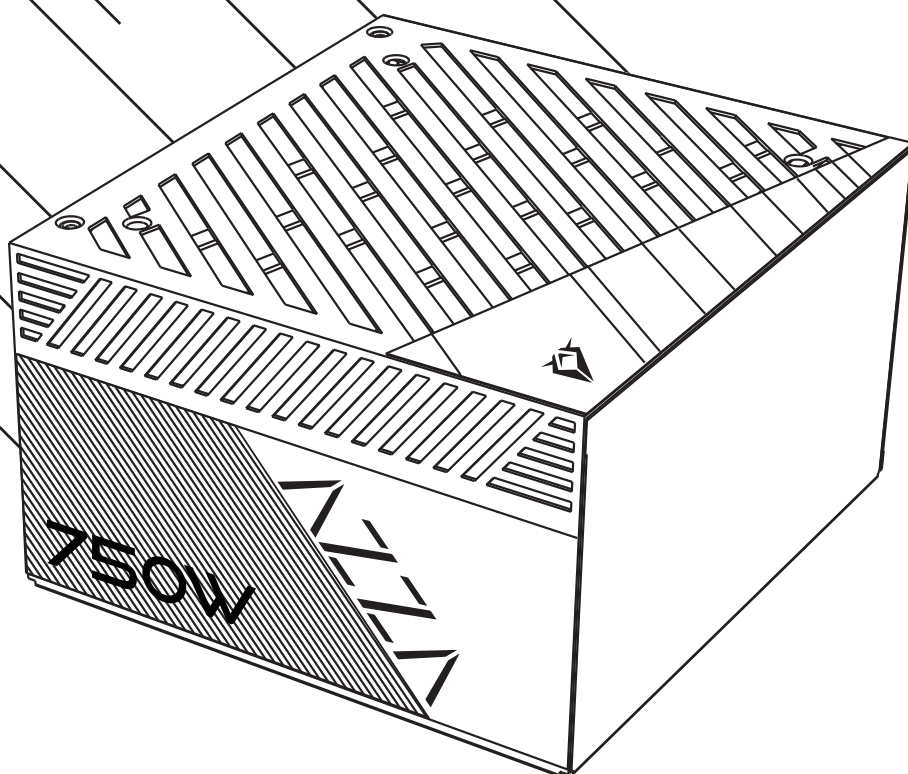




**ATX 3.1**

**PCI-e 5.1**  
Ready



PSAZ-750W  
POWER SUPPLY  
**750W**  
USER MANUAL



# Features

---

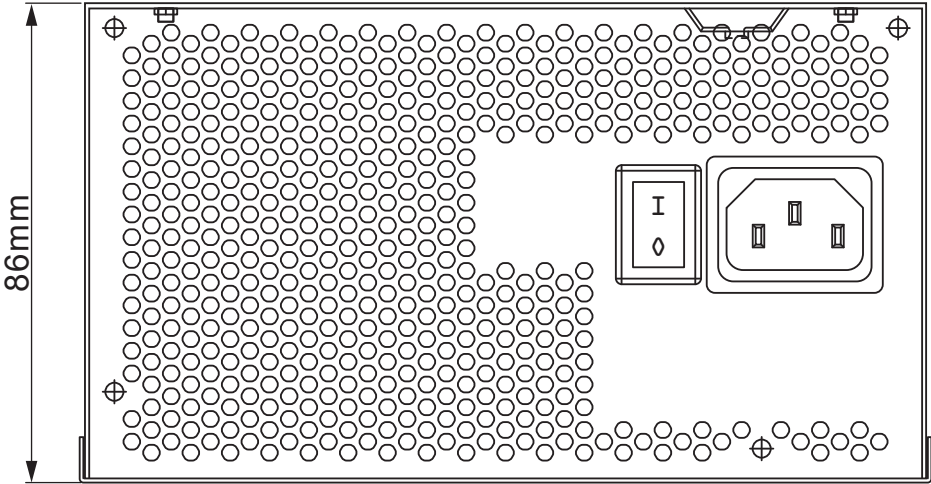
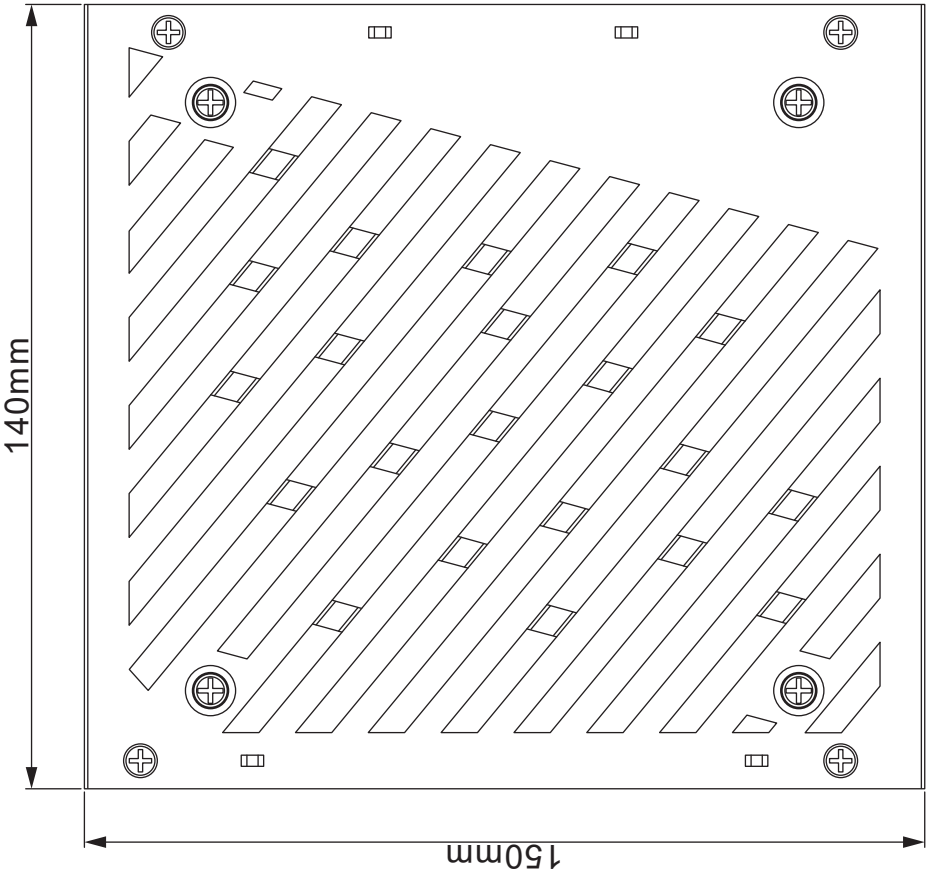
- Complies with ATX12V V3.1
- Efficiency  $\geq$  86% typical load
- 120mm Smart Sleeve Bearing Fan
- Support PCIe Gen 5.1 graphics card
- High-quality 12V-2x6 16-pin cable supports 450W output
- Complete protection: OCP/OVP/OPP/SCP/OTP/UVP
- 80 PLUS® Gold certified

# Specifications

PSAZ-750W	750W Bronze				
AC Input	100-240V~9-5A,50-60Hz				
DC Output Voltage	+12V	+5V	+3.3V	-12V	+5VSB
MAX Output Current	62.5A	15A	15A	0.3A	3.0A
Combined Power	750W	100W		3.6W	15W
Total Power	750W				

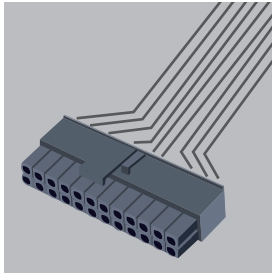
PSAZ-750W	750W Bronze				
AC Input	200-240V~5A 50-60Hz				
DC Output Voltage	+12V	+5V	+3.3V	-12V	+5VSB
MAX Output Current	62.5A	15A	15A	0.3A	3.0A
Combined Power	750W	100W		3.6W	15W
Total Power	750W				

# Dimensions

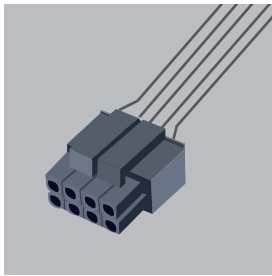


# Connectors

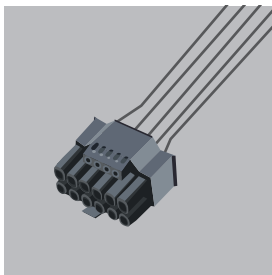
---



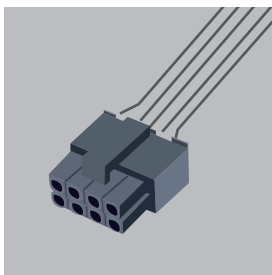
ATX 24 x1



4+4Pin x2



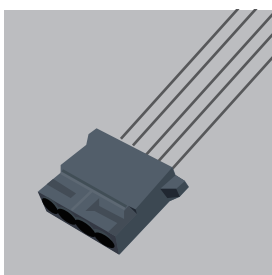
PCIe 12+4 x1



PCIe 6+2 x3



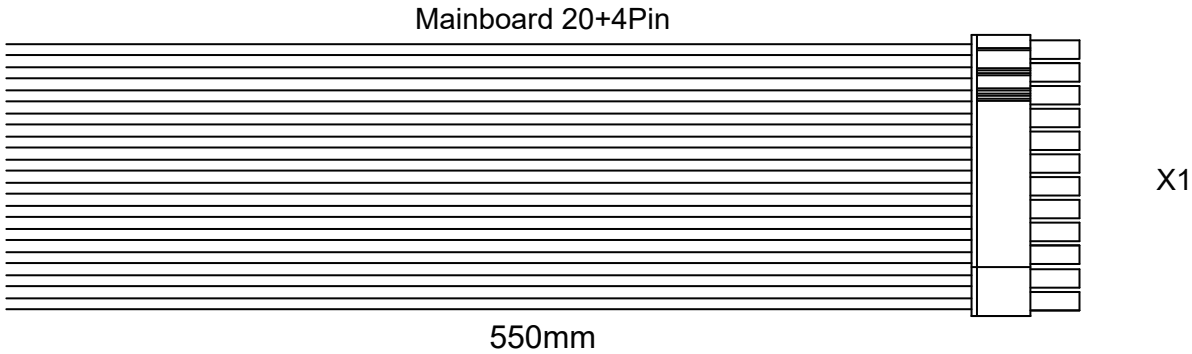
Sata x6



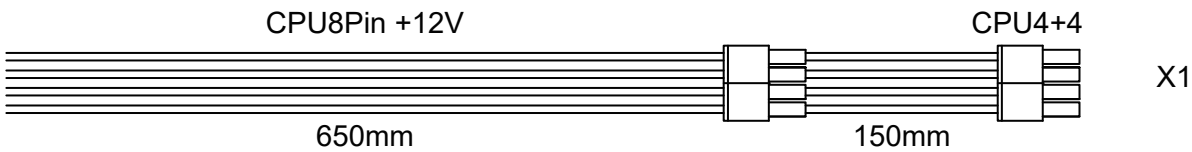
Molex(PERIPHERAL) x2

# Connectivity and Cable Lengths

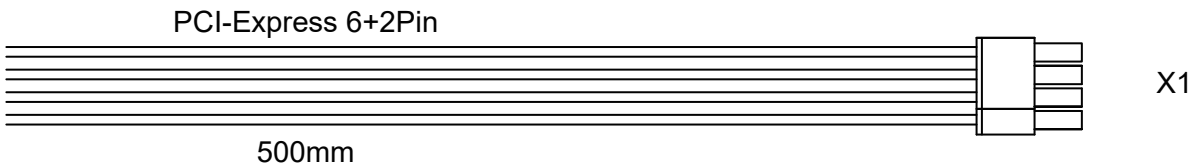
---



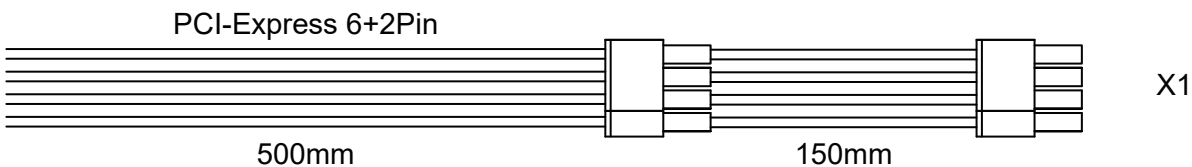
ATX /MB 24 Pin 550mm



CPU(4+4 Pin) 650mm+150mm



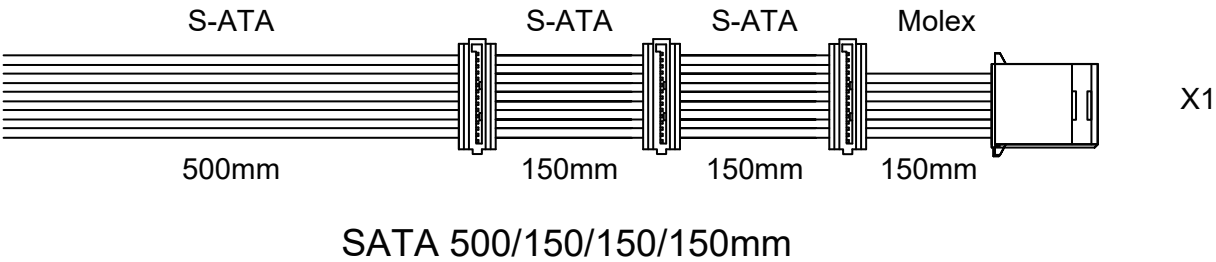
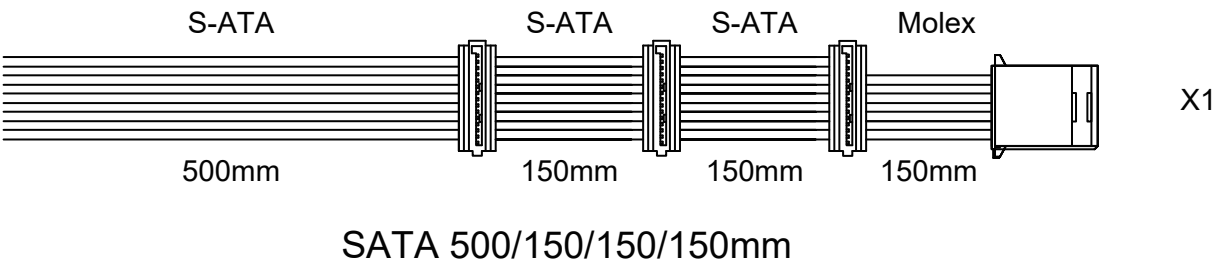
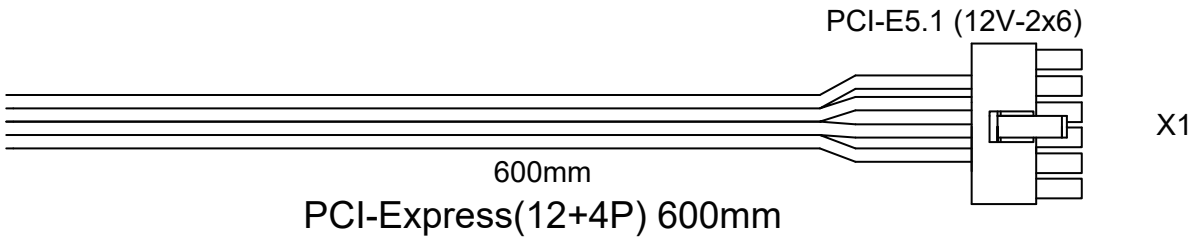
PCI-Express(6+2 Pin) 500mm+150mm



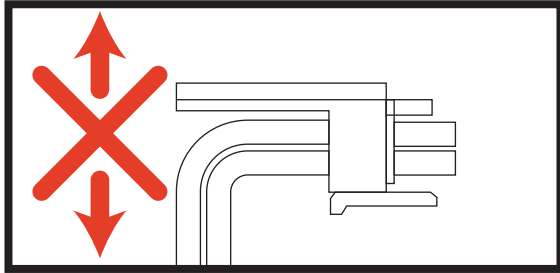
PCI-Express(6+2 Pin) 500mm+150mm

# Connectivity and Cable Lengths

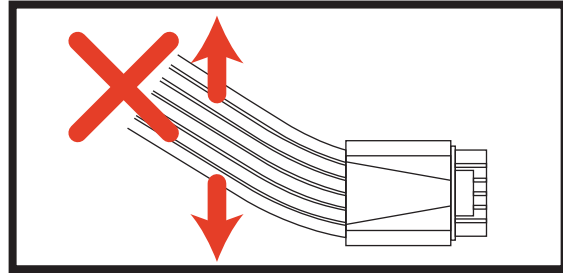
---



# 12V-2x6 Cable Guide



Do not bend vertically

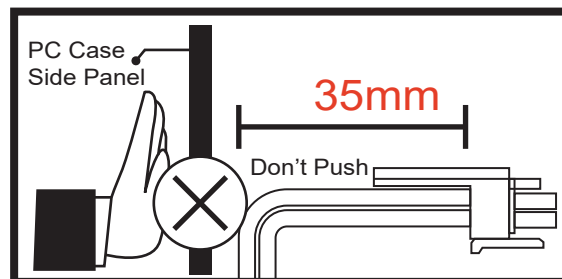


Do not bend horizontally

The 12V-2x6 connector and the terminals used in it are much smaller than the previous generation. Through our extensive testing, it appears that bending the wires too close to the connector could result in some of the terminals coming loose or misaligning within the connector itself. This may lead to an uneven load across the other wires, increasing the risk of overheating damage. The risk of this is substantially higher if the bend is done horizontally in relation to the connector orientation (left to right).



Leave enough 12V-2x6 cable length (around 35mm), then do cable management. The connectors should click to look in.



Bend starting at 35mm from connector

RTX 40/50 Series is bigger than the rest of the models therefore make sure that the width of the case is wide enough for the PSU and RTX40/50 Series GPU.

Once complete install the system, please DO NOT PUSH THE SIDE PANEL otherwise the cable will be squeezed and there will be the risk of OVERHEATING & BURNING.