

DRACO 207

CSAZ-207 / CSAZ-207S

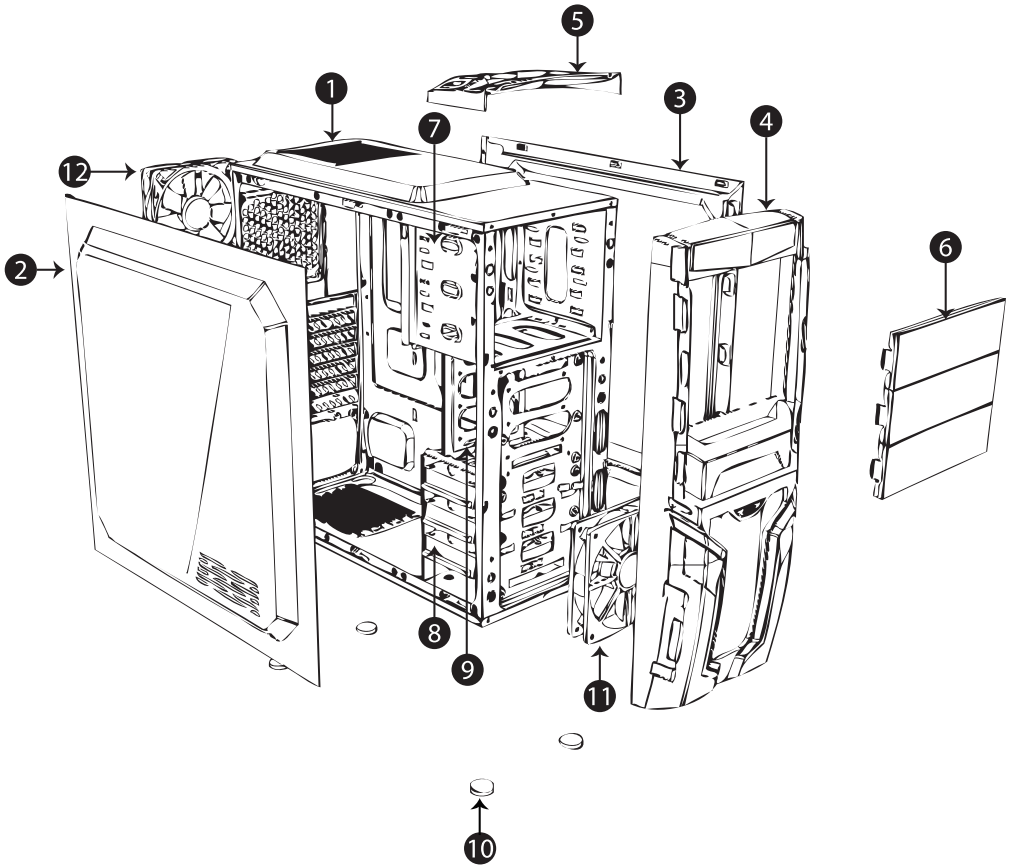


www.azzatek.com

Specifications

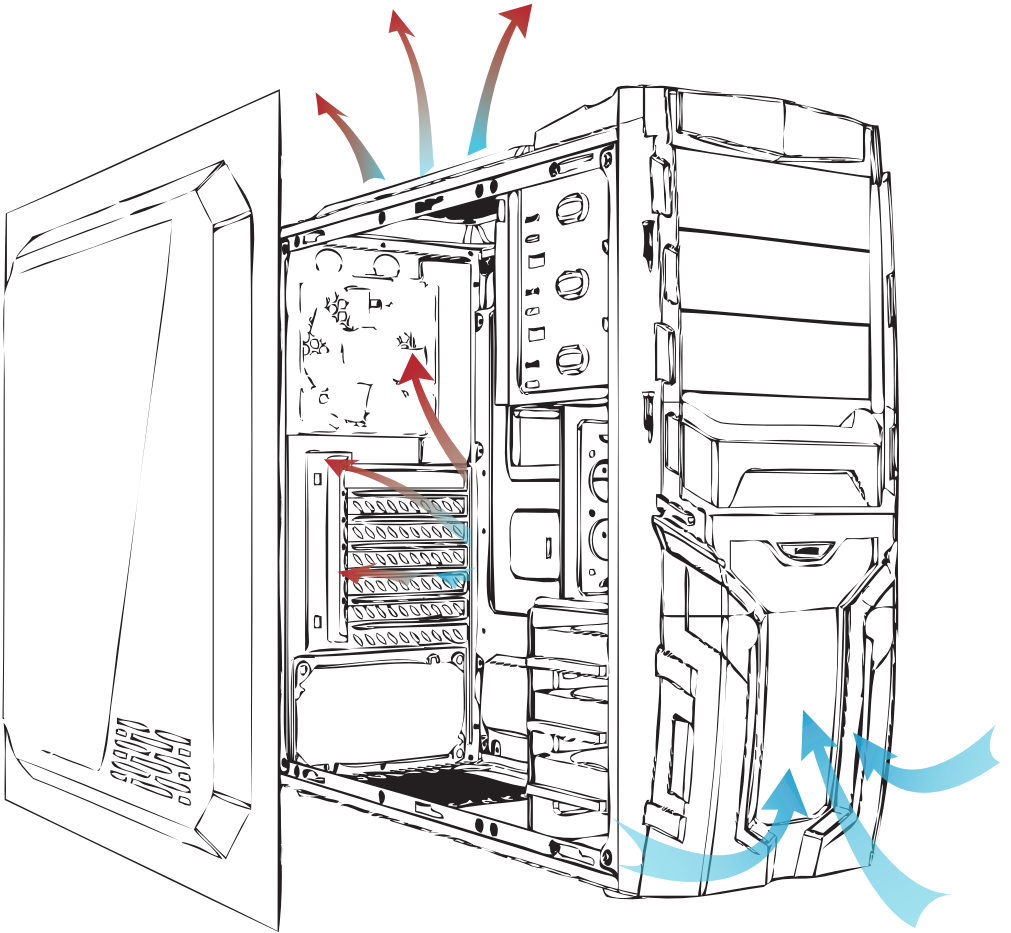
Model	
Model Name	Draco 207
Model Number	CSAZ-207/CSAZ-207S
SPECS	
Type	ATX Mid-Tower
Color	Black(exterior) / Black(interior)
Material	0.40mm
Side Panel	Metal+transparent acrylic
Max CPU Cooler Height	Up to 155mm
Max VGA Card Length	Up to 380mm
Water cooling radiator	up to 120mm
Motherboard Compatibility	ATX, Full ATX, Micro ATX
Power Supply Locations	Rear Bottom
Expansion	
External 5.25" Drive Bays:	3
Internal 2.5" Drive Bays	Up to 3
Internal 3.5" Drive Bays	Up to 3
Expansion slots	7
Front Ports	
CSAZ-207	1 x USB 3.0, 2 x USB 2.0, HD Audio, Mic.
CSAZ-207S	2 x USB 2.0, HD Audio, Mic.
Cooling System (installed)	
CSAZ-207	1x120mm LED Fan in front; 1 x 120mm Fan in rear
CSAZ-207S	1x120mm LED Fan in front
Available Fan Ports (option)	
Front	1x120mm
Top	1x120mm
Rear	1x120mm
Physical Specs	
Dimensions(HxWxD)	450mm x 200mm x 472mm / 17.72 x 7.87 x 18.58 inch
Weight	3.56kgs
Carton Size (H x W x D)	508mm x 237mm x490mm

Parts List

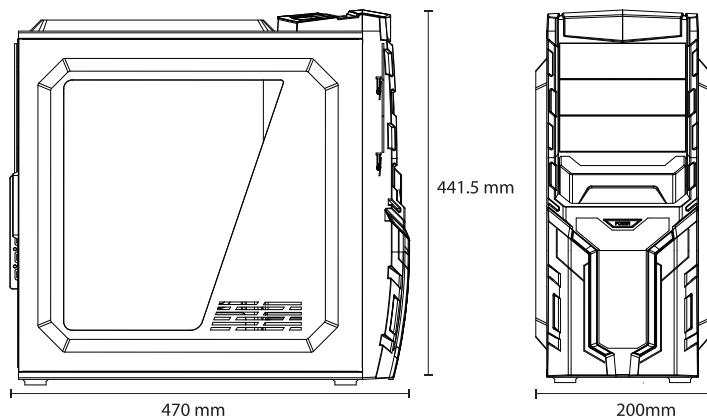




1	Case
2	Left Side Panel
3	Right Side Panel
4	Front Panel
5	Top Panel
6	Front Bezel
7	5.25" Metal Mesh
8	3.5" Metal Mesh
9	2.5" Metal Mesh
10	Foot Pad
11	Front:Blue LED Fan
12	Bottom:Black Fan

Aircooling system

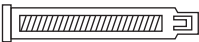
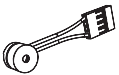

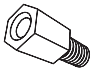

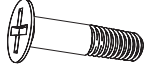


Diagram



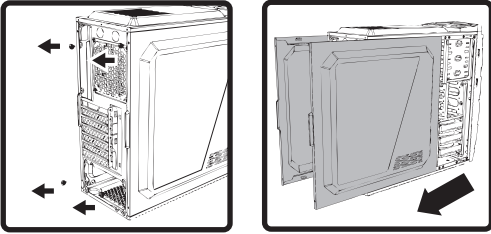
	USB 2.0 (Black)
	USB 3.0 (Blue)
	Mic
	Audio

Assembly kit

Figure	Parts Name	Quantity
	PCI Cover	2
	Speaker	1
	6*6 Hex washer screw	12
	Motherboard Support	8
	M3*5 washer screw	20
	Fan Screw	4

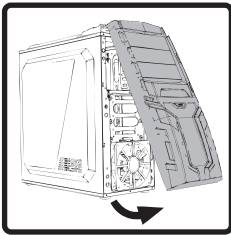
Installation Instruction

1. Opening the case



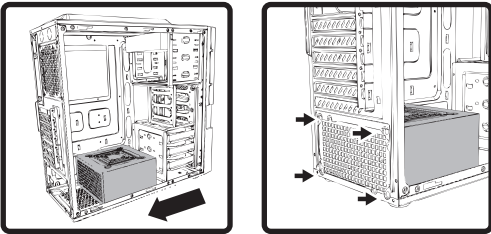
- 1.1 Remove the thumbscrews from the side panel
- 1.2 Slide the side panel toward the rear to open the case

2. Front panel disassembly



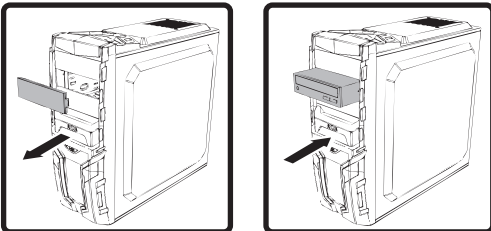
- 2.1 Put your hand on the bottom of the front panel than pull it out

3. Power supply installation



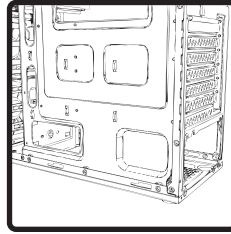
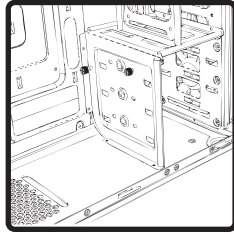
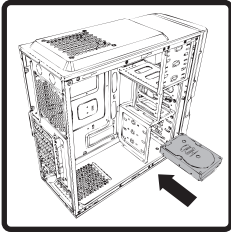
- 3.1 Place the power supply into its proper location
- 3.2 Tighten the screws

4.5.25" floppy device installation



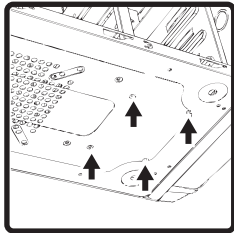
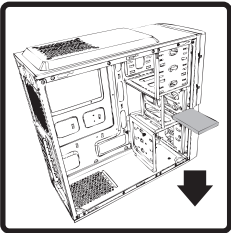
- 4.1 One (either left or right) of the two tabs inward to unlock, as in the direction shown in the figure
- 4.2 Slide the device into the drive bay

5.HDD Device installation



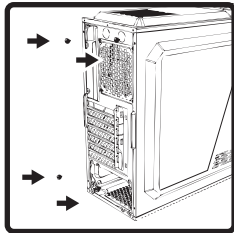
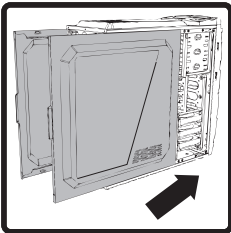
- 5.1 Remove the mesh cover on the front panel covering the drive bay by pressing
- 5.2 One (either left of right) of the two tabs inward to unlock, as in the direction shown in the figure
- 5.3 Slide the device into the drive bay

6.2.5"SDD Device installation



- 6.1 Place the SSD in HDD cage then fasten with thumbscrews
- 6.2 Shown fan the picture

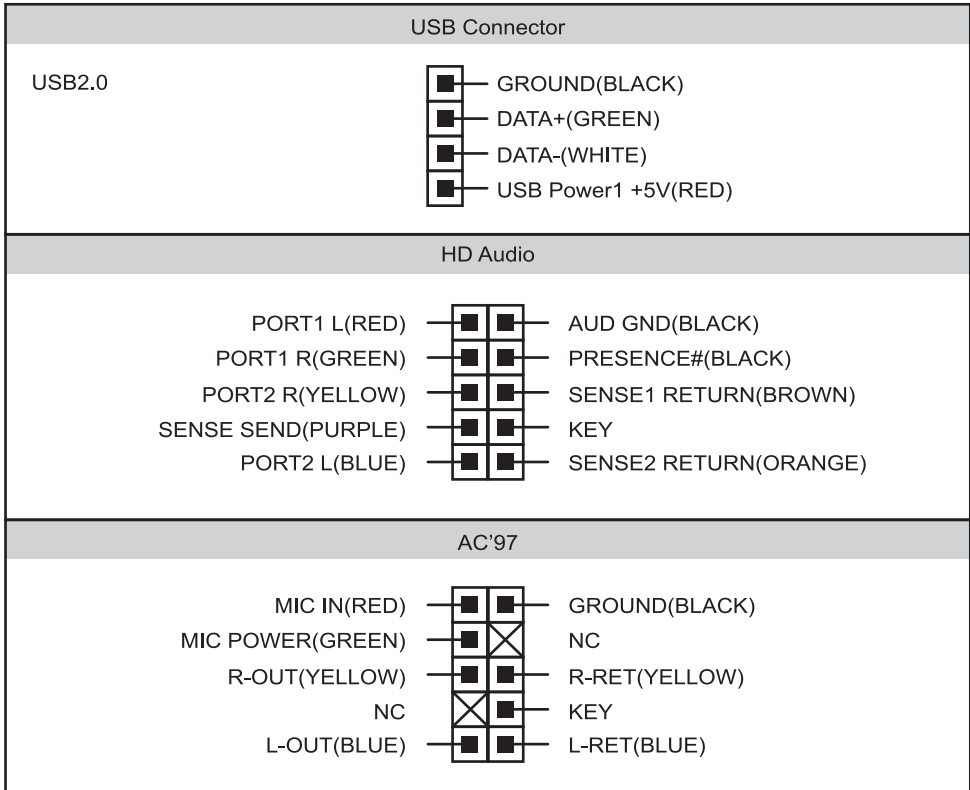
7.Close the case



- 7.1 Closed the side panel along with those screws that we've remove from

Front Connector Installation Guide

Please refer to your motherboard user manual on the sections of "USB connector" And "audio connector".
Please verify the pin definition before connecting the connectors to the motherboard



Remark:

1. USB and Audio connectors have foolproof design, can only be inserted in one direction
2. LED connectors have electrically positive and negative poles